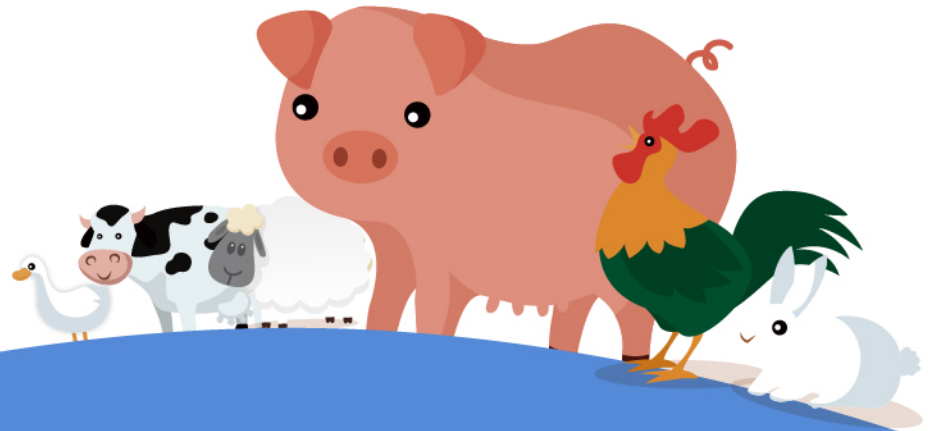




New feed additive products: Tannalbin premix



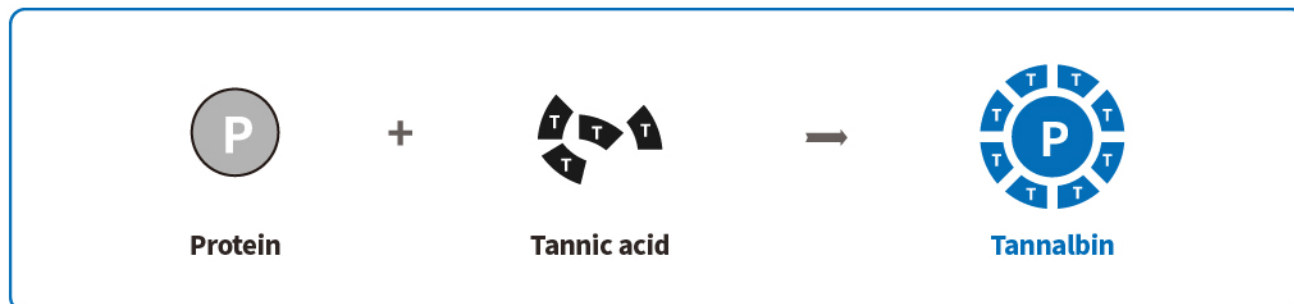
— Tannalbin 40%
(Tannic acid \geq 40%)

- ① No astringency, no irritation, does not change color with water, no reactivity.
- ② A natural plant-based astringent similar to zinc oxide, 2-3 kg of Tanpro-40[®] could completely replaces 2 kg zinc oxide.
- ③ Tanpro-40[®] with intestinal-targeted release is three times more potent than an equivalent amount of tannic acid raw material.



01 Characteristic of Tanpro-40®




Tanpro-40® is the first tannin-protein premix product introduced to the global market by Insighter. Tannin-protein is an enteric-release feed-grade tannic acid product developed and produced by Insighter over more than 15 years of research. This odorless feed-grade tannic acid product is created through a special chemical process that combines tannic acid with protein. It can completely replace zinc oxide and can be used without restriction on animal species, stages, or dosage. It is highly effective in controlling diarrhea, loose stools, and excessive feed passage. The product features targeted intestinal release, and its potency is more than three times higher than raw tannic acid.



Comparison of Different Types of Tannic Acid Products

	Tannic Acid Raw Material	Tanpro-40®	Coated Tannic Acid
Main Process	Extract from tannin-rich plant materials	Tannin-protein reaction product	Fat-coated materials
Intestinal-targeted release	No	Yes	No
Taste	Astringent	Odorless	Partially improved
Effect on Feed Intake (High Dosage)	Reduces feed intake	No impact	Partially improved
Stickiness and Skin Irritation	Strong irritant	Non-irritating	Partially improved
Feed Color Change in Water	Changes color	No color change	Changes color
Potency (Compared to Raw Materials)	1 : 1	3 : 1	1 : 1
Application Cost-effectiveness	Low	High	Low

02 Recommended dosage

Species	Stage	Dose (g/t)	Species	Stage	Dose (g/t)		
Swine (keep ZnO) 	Weaned piglet	1000	Chicken 	Starter	500		
	Nursery	1000		Grower	400		
	Grower	500		Finisher	250		
	Finisher	250		Layer	250		
Swine (remove ZnO)	Creep	2000 - 3000	Breeder	250	Duck 	Meat duck / ayer	250
	Nursery	2000	Breeder	250			
Ruminant	Calf	100 - 500	Aquatic animal		500		
	Lamb	100 - 500	Fur animal		500		
Rabbit		500 - 1000					

